



Mary R. Rinehart

August 1, 1940 - August 11, 2015

Mary Ruth Rinehart, 75, of Hagerstown, died unexpectedly at her home on Tuesday, August 11, 2015.

She was born in New Castle on August 1, 1940 to Rev. George Carvin and Ida (Carender) Riley. She lived most of her life in the Hagerstown area.

Mary was a 1959 graduate of Centerville High School. She was a member of Chicago Corner Christian Church, where she has served on the advisory board, as Sunday School Teacher and often played the piano and sang. She was a 24 year member of Daughters of the American Revolution of Richmond Indiana Chapter and was four times past Regent. She was past president of General Federation of Women's Clubs, Past President of Progressive Literary Club, a former Girl Scout leader, served on the 4-H advisory board and a former board member of Historic Hagerstown.

Survivors include her husband of 55 years, Jerry L. Rinehart; two children, Carvin L. Rinehart of Richmond and Pamela Polk (Daniel) of Salem, SC; a grandson, Brian Carriger; siblings Christine Farmer of Richmond, Samuel Riley of Lancaster, KY, David Riley (Phyllis) of East Germantown, Martha Witham (Bob) of New Castle, Tina Sells (Bethel) of Shirley, IN, John Riley of Crossville, TN and Tracy Peacock of Lawrenceburg, KY; many nieces, nephews and cousins.

In addition to her parents she was preceded in death by a brother, Gerald C. Riley.

Visitation will be 11:00 A.M. to 1:00 P.M. on Saturday, August 15, at Chicago Corner Christian Church. Services will follow at 1:00 P.M. Pastor Roger Hendricks will officiate. Burial will follow in Chicago Corner Cemetery.

Memorials may be made to Chicago Corner Christian Church, 8405 E. SR 38, New Castle, IN 47362.

Cemetery Details

Chicago Corner Cemetery

8405 E. SR 38
New Castle, IN 47362

Previous Events

Visitation

AUG **15**. 11:00 AM - 1:00 PM (ET)

Chicago Corner Christian Church
8405 E. SR 38
New Castle, IN 47362

Service

AUG **15**. 1:00 PM (ET)

Chicago Corner Christian Church
8405 E. SR 38
New Castle, IN 47362

Tribute Wall



“ *Culberson Funeral Home created a Tribute Video in memory of Mary R. Rinehart*



Culberson Funeral Home - August 13, 2015 at 09:31 PM

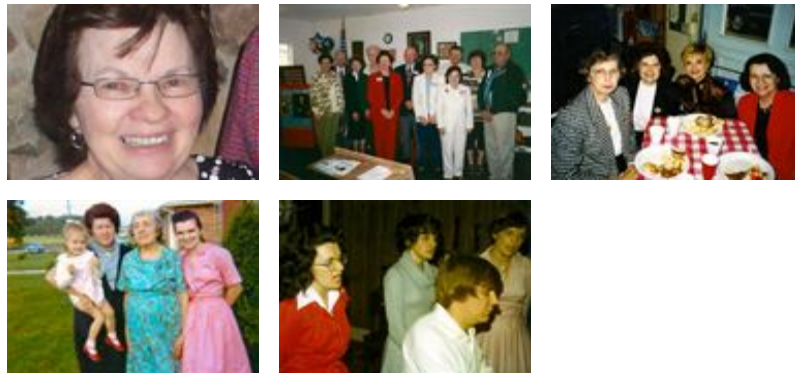
EP

“ *Dear Carvin
I was so sorry to hear of your mother's passing. I know from the person you are how full of caring, fun, and life she must have been. Our thoughts and prayers from everyone at RCT are with you today. Love, Erica and Mark Pearson*

erica pelz - August 15, 2015 at 07:07 AM



“ *42 files added to the album Life Tributes*



Culberson Funeral Home - August 13, 2015 at 09:27 PM

RD

“ So sorry for your loss.
Scott Bush, Peanut Rumble,
Robb Deffenbaugh



Robb Deffenbaugh - August 13, 2015 at 03:18 PM

GC

“ Carvin, son of Mary, this message comes to you from your former IUE colleague Gary, wishing you well despite the sudden loss of your mom, who was apparently a good influence on you.

Gary Cobine - August 13, 2015 at 10:43 AM



“ Treasured Lilies Spray was purchased for the family of Mary R. Rinehart.



August 12, 2015 at 04:54 PM

LL

“ Love from Paul & Karen Litzenberger purchased the Fairest of All for the family of Mary R. Rinehart.



Love from Paul & Karen Litzenberger - August 12, 2015 at 04:45 PM

JG

“ Jerry and family,
I am so sorry to read of Mary's passing. I knew her as a sweet and cheerful person and am glad to be able to say so. She is gone far too soon and I am truly sorry it is so.
Judy Garvin

Judy Garvin - August 12, 2015 at 09:18 AM

LI

“ Our thoughts and prayers are for Mary's family at this time. A fun-loving lady and a bundle of energy. So sorry to hear this news. Mary will truly be missed.

Lothair & Jean Ann Irvin - August 11, 2015 at 08:55 PM

JA

“ My heart goes out to all of Mary Ruth's family. She always had a wonderful smile and a cheery hello for me. I'm sure she has a special place in heaven.

Janet - August 11, 2015 at 06:56 PM

DW

“ Sorry David for your families loss.

Dennis Wissler

Dennis Wissler - August 11, 2015 at 06:33 PM

SB

“ I am so sorry to hear this . She was such a good person . Prayers to her family . love and Prayers , Stacy Dale Bivens

Stacy Dale Bivens - August 11, 2015 at 04:02 PM



WHAT A SWEET SWEET LADY. SHE WILL BE MISSED

Nancy Bonanza - August 12, 2015 at 06:33 AM

PM

So sorry we didn't know in time to attend the funeral. It was great to visit with Carvin recently at the art museum. Thinking of you all at this very sad time...Jerry and Phyllis and all the family

Phyllis Mattheis - August 17, 2015 at 06:46 AM